

NEW VENTURE THEATRE

newsletter
january 2021

[Preview:](#)

[The Lieutenant of Inishmore 1
2021/22 Season 2](#)

[Call for Proposals to Direct 5](#)

[Coming Soon: The Herd 5](#)

[NVT Calendar 6](#)

[Volunteering Update 8](#)

[NVT Information 9](#)

[Contacting the NVT 10](#)

[Booking Tickets 11](#)

Bedford Place, Brighton BN1 2PT

Preview

21–29 January 2022

THE LIEUTENANT OF INISHMORE

by Martin McDonagh

directed by Steven O'Shea

Martin McDonagh's output as playwright including *The Beauty Queen of Leenane*, *The Cripple of Inishmaan* and *The Pillowman* and as screenwriter and director which include *In Bruges* and *Three Billboards Outside Ebbing, Missouri*, have won him much acclaim. However, he has always remained no stranger to controversy and *The Lieutenant of Inishmore* is his most controversial play.

Written in 1994 it was considered so incendiary that it was rejected by the Royal National Theatre and The Royal Court both of whom had championed his earlier work. McDonagh claimed this was because of concern that the piece would so offend Irish terrorists that there would be violent reprisals, or that the play could contribute towards destabilising the then

emerging Northern Ireland peace process. McDonagh affirmed that he would not permit any more of his plays to be produced until *The Lieutenant of Inishmore* was staged in Britain. Three years after the Good Friday Agreement it finally was and went on to be successfully presented around the world.

Although the situation in Ireland has been transformed since the play was written, it remains controversial. Indeed, more than once I was asked why I would wish to stage a play that could be interpreted as showing the Irish, and particularly Irish republicanism, in such a bad light. In truth I had not considered the play in those terms despite my Irish background and the significant strain of republicanism in my family history (my

continued on page 3

- October 1-9** **Di and Viv and Rose**
Studio *by Amelia Bullmore • directed by Claire Lewis*
- December 10-18** **Bag Lady's Christmas Present**
Studio *by Brenda Bishop, Sarah Davies & David Tutton*
- January 21-29** **The Lieutenant of Inishmore**
Main Theatre *by Martin McDonagh • directed by Steven O'Shea*
- February 18-26** **The Herd**
Main Theatre *by Rory Kinnear • directed by Charly Sommers*
- March 18-26** **Unsanctioned (double bill)**
Studio *by Sam Chittenden • directed by Sam Chittenden*
- Measure 2 Measure (double bill)**
by Shakespeare • adapted by Sam Chittenden
- April 22-30** **Hangmen**
Main Theatre *by Martin McDonagh • directed by Pat Boxall*
- May 13-21** **Cock**
Studio *by Mike Bartlett • directed by Richard Lindfield*
- May 27-June 4** **Consent**
Main Theatre *by Nina Raine • directed by Scott Roberts*
- June 17-25** **Turpin**
Studio *by Barry Purchase • directed by Mark Lester*
- July 15-23** **Communicating Doors**
Main Theatre *by Alan Ayckbourn • directed by Ian Black*

THE LIEUTENANT OF INISHMORE

grandfather was a Lieutenant Colonel in the IRA in the 1920s). Why then was the less than sympathetic depiction of Irish republicanism not a consideration in my choosing this play?

The primary reason was that I saw the original UK production by the RSC in Stratford quite by accident. I had gone to the main theatre to see a Shakespeare production when I noticed there was a new play by an unknown playwright at their subsidiary theatre. As an afterthought I bought a ticket and there I experienced one of those rare theatrical

events where I was completely blown away. Here was a startlingly new and original voice – daring, iconoclastic, savagely funny with an exuberant use of language and a bold sense of theatricality. It was as though, like playwright Joe Orton, McDonagh had harnessed the subversive potential of farce and then applied it to the politics of violence.

continued overleaf

BELOW From left to right, back: Joseph Gavin, Culann Smyth, Nikolas Balfe, John Everett; front: Mark Lester, Ben Grafton. (Photo by Strat Mastoris)



THE LIEUTENANT OF INISHMORE



ABOVE Nikolas Balfe and Susanna Elliot
(Photo by Strat Mastoris)

The second reason was that from the start I never viewed the piece as being specifically about Irish republicanism but about fanaticism and extremism in all its guises. McDonagh has spoken of the play being written from a position of pacifist rage; that it was a violent play that was whole-heartedly anti-violence. By addressing terrorism in a way that was applicable globally, he could explore its cultural representation and invite us to reflect on our responses to it. And no audience should ever leave the theatre feeling entirely comfortable with their responses to a Martin McDonagh play.

As always, I am deeply indebted to the hard work and commitment of the theatre staff, production team and cast. I would like to express my immense appreciation to them all.

Steven O’Shea

This amateur production of The Lieutenant of Inishmore is presented by arrangement with Concord Theatricals Ltd. on behalf of Samuel French Ltd.
www.concordtheatricals.co.uk

Call for proposals to direct for our 75th Season 2022/23

If you have been considering submitting a play for next season now is the time. Please use the Proposal to Direct Form found on the NVT website under the [Formal Documents page](#) and send it to me at:

kabrownings@googlemail.com

The proposal form has changed slightly. It now asks the director to submit a budget request for their play. It is not ex-

pected that this will be set in stone but I am asking for a rough idea of what the expected expenses will be and a justification for these costs. The budget for each play will no longer be a fixed amount but will be awarded through the Artistic Team and will be based on the artistic requirements of a production.

Katie Brownings

art.dir@newventure.org.uk

Coming Soon

18–26 February 2022

THE HERD

by Rory Kinnear

directed by Charly Sommers

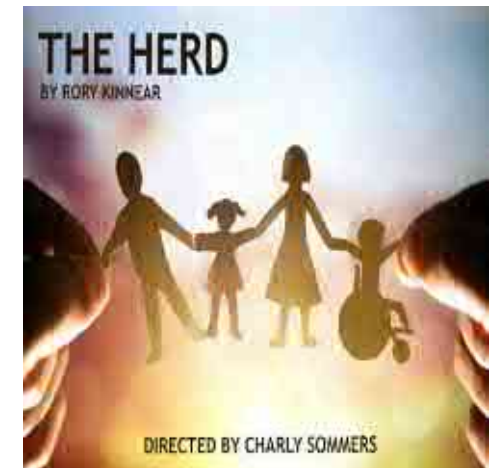
Pulling Together.

Falling Apart.

The day isn’t going as planned. But nor is life...

As Carol prepares to celebrate the 21st birthday of her severely disabled son, Andy, the rest of the family gather: Andy’s older sister. Their grandparents... And Ian, Andy’s absentee father who is loathed by everyone in the room.

While Andy and his caregiver make their way to the house, ranks close and wounds open... The Herd is a witty, heartfelt portrait of a family brought together and torn apart by circumstance and secrets.



An amateur production by arrangement with Nick Hern Books

Monday

Tuesday

Wednesday

Thursday

Friday

Saturday

Sunday

January

3

4

5

6

7

1

2
Sussex Playwrights 6pm

10

11

12

13

14
NVYT

8

9
Cock auditions

17

18

19

20

21
THE LIEUTENANT OF INISHMORE 7.45pm
NVYT

22
THE LIEUTENANT OF INISHMORE 7.45pm

23
THE LIEUTENANT OF INISHMORE 2.30pm

24

25
THE LIEUTENANT OF INISHMORE 7.45pm

26
THE LIEUTENANT OF INISHMORE 7.45pm

27
THE LIEUTENANT OF INISHMORE 7.45pm

28
THE LIEUTENANT OF INISHMORE 7.45pm
NVYT

29
THE LIEUTENANT OF INISHMORE 7.45pm

30

31

February

1

2

3

4
NVYT

5

6
Sussex Playwrights 6pm

7

8

9

10

11
NVYT

12

13

14

15

16

17

18
THE HERD 7.45pm

19
THE HERD 7.45pm

20
THE HERD 2.30pm

21

22
THE HERD 7.45pm

23
THE HERD 7.45pm

24
THE HERD 7.45pm

25
THE HERD 7.45pm
NVYT

26
THE HERD 7.45pm

27

28



Volunteering Update

As a charity we are heavily reliant upon our volunteers to help make productions and support all the activities behind the scenes that make us good at what we do, and we are looking for more volunteers, with roles available to suit all levels of commitment. As well as backstage roles for our productions, we are also looking for:

BAR

On show nights we need people to run the bar. You will take interval drinks orders and lay them out, and then before the show, in the interval and after the show, sell drinks. We encourage all members to offer themselves for a bar shift, and we are happy to give full training.

So, if you are interested please contact Ian Black ian.black@newventure.org.uk

BOX OFFICE

Serving in the Box Office is a great role for being in the centre of what is going on at NVT. You meet lots of people, both the creative types and audience members, and you're doing something which is, of course, critical to the theatre: no box office, no tickets, no money, no theatre!

If you can support the manager one night during a run, we can show you the ropes.

So, if you are interested please contact the Box Office Manager, Ian Amos boxoffice@newventure.org.uk

In addition we have the following non-trustee roles where giving a few hours a month or a few hours per week (depending on which role):

FRONT OF HOUSE COORDINATOR

Manage the bar and front of house services; working with the Front of House team to ensure the bar is adequately stocked; and ensure the bar has adequate cover by organising volunteers into shifts for each live performance and other events in liaison with the Volunteer Coordinator. The person undertaking this role should be a Personal License holder or be willing to obtain one, and bar experience would be an advantage.

SOCIAL MEDIA COORDINATOR

Provide media support to the theatre through Facebook, Twitter, Instagram, etc to inform the public on productions and other items of interest promoting the theatre. This role will involve interaction and coordination with other volunteers such as the Artistic Director, Publicity & Marketing Coordinator and Volunteer Coordinator.

HEALTH AND SAFETY ASSISTANT

Assist the Chairman with overall health and safety activities, including H&S risks in productions.

COMPANY STAGE MANAGER

Help deliver a successful season of plays by overseeing the backstage and technical work of the Theatre. Including coordination of other members/actors and set design & construction, lighting, sound, props, wardrobe and stage management.

If so, please contact us at: volunteering@newventure.org.uk

NVT Information

Our angels

Why not become an angel, Fallen Angel, Archangel or even Archangel Gabriel to help us support our current and future improvements to our theatre. Our angels have proven to be generous in the assistance they give us. For further information please contact the Angel Coordinator Gerry McCrudden:

angels@newventure.org.uk

If you are a UK tax payer your donation may also benefit from Gift Aid.

Our sponsors

Our sponsorship deal is £250 for a year's advertising on our website and in our newsletter and programmes, plus 2 complimentary tickets for each production in that year.



NVT membership

If you are already an NVT member and if you haven't done so already, can I encourage you to sign in to the membership database and check your personal details. Our new on-line data base is now fully operational and you will receive an email when your membership is due for renewal but it is important that we have your correct details. If you are not a member and want to join NVT the annual membership is £15.

To join, renew or check your membership details just go to our website:

www.newventure.org.uk/join-us

Raymond Tongue

membership@newventure.org.uk



Contacting the NVT

The New Venture Theatre
Bedford Place
Brighton BN1 2PT



[@NewVentureTheatreBrighton](#)

Chairman

Ian Black*
chairman@newventure.org.uk

Secretary

Jerry Lyne*
secretary@newventure.org.uk

Artistic Director

Katie Brownings*
art.dir@newventure.org.uk

Treasurer

Alison McMillan-Puri*
finance@newventure.org.uk

Production Coordinator

Tom Kitch*
prod.mgr@newventure.org.uk

Buildings Manager

Peter Meekings*
buildings@newventure.org.uk

Front of House Coordinator

VACANT
frontofhouse@newventure.org.uk

Company Stage Manager

VACANT

Box Office Info

01273 746118
(answerphone only)
boxoffice@newventure.org.uk



[@nvt_brighton](#)

Fundraising

VACANT
fundraising@newventure.org.uk

Box Office Manager

Ian Amos
boxoffice@newventure.org.uk

Volunteer Coordinator

VACANT
volunteering@newventure.org.uk

Technical Coordinator

Apollo Videaux
tech@newventure.org.uk

Membership Secretary

Raymond Tongue
membership@newventure.org.uk

Newsletter Editor

Tom Kitch*
newsletter@newventure.org.uk

Publicity & Marketing Coordinator

Aldo Oliver Henriquez
publicity@newventure.org.uk

Props Coordinator

VACANT

General Enquiries

01273 808353
info@newventure.org.uk



[@brightonnewventuretheatre](#)

Little Theatre Guild Rep

Pat Boxall
pat.boxall@newventure.org.uk

Child Protection Officer

Pat Boxall
pat.boxall@newventure.org.uk

Social Events Manager

VACANT
social@newventure.org.uk

NVYT Coordinator

Andrew Allen
youththeatre@newventure.org.uk

Angels

Gerry McCrudden
angels@newventure.org.uk

Archives

Gerry McCrudden

Acting Class Coordinator

Neil Hadley
(assisted by Apollo Videaux)
actingclass@newventure.org.uk

Social Media Coordinator

VACANT

*Asterisks indicate trustee
committee members.

Booking tickets

TICKET PRICES AND PERFORMANCES

Members £9 / Non-Members £10 until
February 2022, then £10 and £12
respectively from March.

Evening performances are at 7:45pm.
Sundays are matinees only at 2:30pm
and they will have reduced seating to
allow the audience to socially distance.
There are no performances on Mondays.

HOW TO BOOK TICKETS

You can book by post using the form
below or online at:

www.newventure.org.uk

CONTACTING BOX OFFICE

Box Office (answerphone only):

01273 746118

For all ticketing enquiries, please email:

boxoffice@newventure.org.uk

STUDIO THEATRE SEATING AND ACCESS

The Studio has unallocated seating.
There is one step at the entrance.

THEATRE UPSTAIRS SEATING AND ACCESS

The Theatre Upstairs has allocated seat-
ing; please use the seating chart overleaf
and indicate your first, second and third
choice seats using 1s, 2s and 3s respect-
ively, and fill out your contact details be-
low. Access to the Theatre Upstairs is
only possible by 4 flights of stairs and
therefore may not be suitable for those
with limited mobility.

It is important you provide your name,
phone number and address, and email
address where possible

CUT ALONG THE LINE, AND RETURN YOUR COMPLETED SLIP
TOGETHER WITH A CHEQUE TO: NEW VENTURE THEATRE,
BEDFORD PLACE, BRIGHTON BN1 2PT

your name:

address:

email:

phone number:

NVT Covid Precautions for the 2021–22 Season

While we are very pleased to be open for the 2021–22 season, we want to do our very best to minimise the risk of infection for our audiences and volunteers. For this reason, our current policy is as follows:

WEARING MASKS

We request that all members of the audience wear masks at all times other than when seated in the South Hall bar unless exempt from doing so.

SOCIALLY DISTANCED SUNDAY MATINEES

All Sunday matinees and all performances of *Bag Lady's Christmas Present* will be at reduced capacities and the seating will be unallocated to allow for social distancing.

DOUBLE JABS & TESTING FOR CAST AND CREW

All cast and crew should be double-jabbed (and have any boosters when appropriate) if they will be in direct contact with other cast and crew in the theatre and will need to self-test twice per week any week they are in the theatre.

Production	Date	# Members tickets (£9 until March)	# Non-member tickets (£10 until March)	Total cost
THE LIEUTENANT OF INISHMORE (21–29 January) Theatre upstairs – mark seat preference below *				
THE HERD (18–26 February) Theatre upstairs – mark seat preference below *				
UNSANCTIONED/MEASURE 2 MEASURE (18–26 March) Studio theatre – unreserved seating		(£10)	(£12)	

	F2	F3	F4	F5	F6	F7	F8	F9	F10	F11	F12	* Seating for Sunday matinees in the Theatre Upstairs will be unallocated, so don't indicate a seat preference	
Write '1', '2' or '3' for your first, second and third choice seats. Seat F1 is normally unavailable.	E1	E2	E3	E4	E5	E6	E7	E8	E9	E10			
	D1	D2	D3	D4	D5	D6	D7	D8	D9	D10	D11	D12	D13
	C1	C2	C3	C4	C5	C6	C7	C8	C9	C10	C11	C12	C13
	B1	B2	B3	B4	B5	B6	B7	B8	B9	B10	B11	B12	B13
	A1	A2	A3	A4	A5	A6	A7	A8	A9	A10	A11	A12	A13

STAGE

EXIT