

# SHORT PLAYS 2022

**How He Lied To Her Husband** by George Bernard Shaw

directed by Neil Hadley

**The Evils of Tobacco** by Anton Chekhov

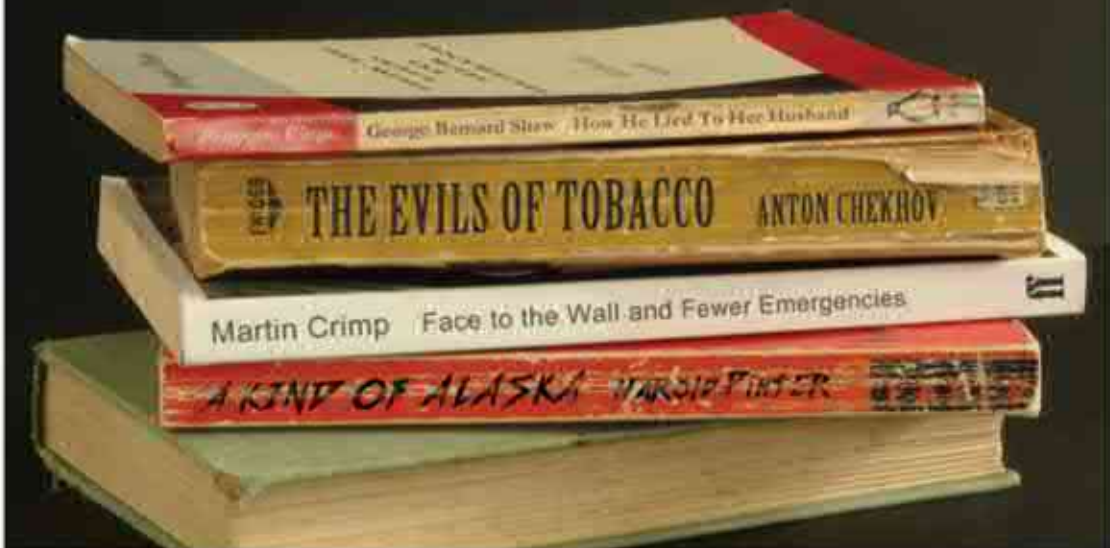
directed by Tobias Clay

**Face to the Wall & Fewer Emergencies** by Martin Crimp

directed by Stefan Haselwimmer

**A Kind of Alaska** by Harold Pinter

directed by Gaby Bowring



**NEW  
VENTURE  
THEATRE**

Bedford Place,  
Brighton BN1 2PT

Friday 7th - Saturday 15th October 2022 at 7.30pm  
Matinee: Sunday 9th October at 2.30pm

[www.newventure.org.uk](http://www.newventure.org.uk)  
[www.facebook.com/NewVentureTheatreBrighton](https://www.facebook.com/NewVentureTheatreBrighton)

Registered Charity No. 268607

# SHORT PLAYS 2022

## **A Kind of Alaska by Harold Pinter directed by Gaby Bowring**

At the age of sixteen, Deborah fell victim to a sleeping sickness. She has been suspended between a conscious and unconscious state ever since, watched over throughout by her devoted doctor. Twenty-nine years later, Hornby is now able to revive his patient and observe as Deborah reawakens, gently helping her to adjust to a world beyond her recognition.

## **How He Lied to Her Husband by George Bernard Shaw directed by Neil Hadley**

Bernard Shaw takes a refreshing and critical attitude to the traditional bourgeois love triangle situation and explores a plot twist at the end of the piece which is both thought-provoking and entertaining.

Set in a well furnished flat in London, Aurora Bompas is flustered as she has misplaced a collection of love poems from her admirer, Apjohn. He is a "beautiful youth" of around nineteen years and has a naive and poetic view of love and relationships.

## **Face To The Wall & Fewer Emergencies by Martin Crimp directed by Stefan Haselwimmer**

Some people reflect on a gun massacre, others argue about the fate of "poor Bobby" trapped in his own horror story. This sinister, graphic and timely piece by Martin Crimp forces us to question cosy norms and the polished perfection of the tales we tell ourselves.

## **The Evils of Tobacco by Anton Chekhov directed by Tobias Clay**

Written in 1886, a henpecked husband offers/is required to give a lecture on the harmfulness of tobacco (veering wildly off-topic resulting in a greater understanding of his own pathos-laden ineptitude).

A typically cynical, ultimately hilarious Chekhov tour-de-force short.

**DEBORAH - Janice Jones**  
**HORNBY - Simon Messingham**  
**PAULINE - Sarah Donnelly**

**MR APJOHN - Matt Foster**  
**AURORA BOMPAS - Catie Ridewood**  
**MR BOMPAS - Mickey Knighton**

**FTTW CHARACTER 1 - Maximillian Logan Wright**  
**FTTW CHARACTER 2 & 4 - Justine Smith**  
**FTTW CHARACTER 3 - Olly Lloyd-Hooker**  
**FE CHARACTER 1 - Maximillian Logan Wright**  
**FE CHARACTER 2 - Justine Smith**  
**FE CHARACTER 3 - Olly Lloyd-Hooker**

**NYUKHIN - John Tolputt**

**DIRECTORS: Gaby Bowring, Neil Hadley, Stefan Haselwimmer & Tobias Clay**  
**PRODUCTION MANAGER: Ian Black**  
**STAGE MANAGERS: Carol Croft, Trish Bayliss**  
**COSTUME DESIGN: The directors**  
**SET DESIGN & CONSTRUCTION: George Walter,**  
**Simon Glazier, John Everett**  
**LIGHTING DESIGN & RIGGING: Strat Mastoris, Carol Croft, Will Metcalf**  
**LIGHTING OPERATOR: Alex Epps**  
**SOUND DESIGN: Ian Black**  
**SOUND OPERATOR: Gaby Bowring**  
**PROPS: Carol Croft**  
**POSTER & PROGRAMME: Tamsin & Strat Mastoris**  
**PRODUCTION COORDINATOR: Tom Kitch**  
**PHOTOGRAPHY: Strat Mastoris**  
**PUBLICITY & MARKETING: Emmie Spencer**  
**HEALTH & SAFETY: Ian Black**

**Thanks as always, to the Front of House and Box Office teams,**  
**without whom no show would ever go on.**



### Gaby Bowring – Director (A Kind of Alaska)

Gaby has stage managed a variety of NVT productions, most recently 'Turpin', 'The Lieutenant of Inishmore' and 'Miss Julie'. She's also stage managed for the Wick Theatre Company and Southwick Players, as well as at the Rialto and Brighton Open Air Theatre. 'Alaska' is her directorial debut, and she thanks everyone involved for their help and support.

### Janice Jones - Deborah

Janice has been involved in theatre for a long time, with film work scattered in between. Recent performances at the NVT include 'Talk', 'True West' and 'Broken Glass'. She has very much enjoyed exploring the fascinating world of Alaska in her sand bag in the Sahara Desert.



### Simon Messingham – Hornby

Simon was last spotted at the NVT as the Earl in 'Turpin', then spent the summer playing Merlin the Magician in a tour of his own play 'On the Road with Liz & Jessie'. A writer by trade, he's previously popped up in the NVT's 'The Father', 'How Many Miles to Babylon', 'Hughie', 'The Herbal Bed' and 'The Winslow Boy'.

### Sarah Donnelly – Pauline

At college, many moons ago, Sarah performed a variety of roles, including Fairy Nightmare in 'Sleeping Beauty', Carla in 'Kennedy's Children' and a middle-aged doctor's wife in 'Habeas Corpus'. Since then, she's focused on her singing, cabaret and compere work, which includes hosting the Sassy Cabaret Club. Now the 'right' age to play a middle-aged woman, she's thrilled to be treading the boards again.



## Neil Hadley - Director (How He Lied to Her Husband)

Neil's first engagement in the entertainment industry was working as a Bluecoat entertainer in Pontin's holiday camps. He later went on to complete a Drama Degree at the University of Exeter and completed a Masters Degree in English Literature focussing on Playwriting and Film & Fiction. He currently leads a Performing Arts department in a Sixth Form College, delivering courses in Acting, Playwriting and Musical Theatre. Neil was Assistant Director on the NVT production of 'Measure To Measure'. This is Neil's first experience of directing at NVT.



## Matt Foster - Mr Apjohn

Matthew (Foster) is making his acting debut at the New Venture Theatre in How He Lied to Her Husband. Though he is not new to acting or NVT. Having performed and directed a number of plays throughout his time at university, including 'Frankenstein', 'Midsummer Night's Dream', 'Twelfth Night', and 'Cinderella'. He has also operated the lights and sound for numerous NVT productions including 'Consent', and 'Hysteria'. He is extremely excited to get back on the stage after a period of absence. In the daytime, he spends his time looking at maps all day.



## Catie Ridewood - Aurora Bompas

Catie is a Brighton-based actor who recently graduated from the Academy of Creative Training. She is excited to be a part of the Short Plays, in 'How He Lied to Her Husband'. She previously performed at NVT as Kina in 'Unsanctioned'. Other Theatre includes Chris/Linda in 'Between a Man and a Woman' (Bread & Roses Theatre) and Cindy in 'Whose to Tell' (Baron's Court Theatre). Credits whilst training include Dol Common in 'The Alchemist'.



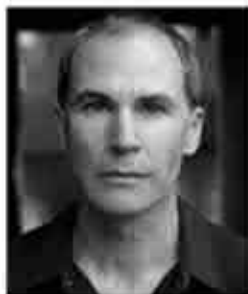
## Mickey Knighton - Mr Bompas

Hailing from Sheffield and of Irish descent, Mickey came to acting later than most. He has a BA in film and sociology and has been fascinated by the craft of acting since youth. A former career in the restaurant industry as well as stints living in London, Spain, Newcastle and Brighton mean he brings a varied life experience to his character research, rehearsal and performance which he approaches with energy and empathy. Darkly comic, dry, witty comedy are his driving characteristics however via his training he's also found himself at home playing strong characters in contemporary drama as well as relishing the challenge of classical or historical text.



**Stefan Haselwimmer - Director**  
**(Face to The Wall & Fewer Emergencies)**

Stefan Haselwimmer is a screenwriter and actor who trained at Drama Centre London. He moved to Brighton in 2021 and regularly attends NVT's acting classes.



**Maximillian Logan-Wright**  
**Face to the Wall & Fewer Emergencies**  
**Character 1**

Trained with Manchester school of acting and performed in numerous plays in and around Manchester. Having only recently moved to Brighton and being new on the scene, Max looks to expand his creativity and push his career.

**Justine Smith**  
**Face to the Wall & Fewer Emergencies**  
**Character 2 & 4**

Last on stage in 'Hedda Gabler' as Aunt Julianna, Justine is happy to be back in the theatre. She trained with the Impulse Company (Meisner technique) and Philippe Gaulier, her last role at the NVT was as Miss Haversham in 'Great Expectations'. These Crimp pieces have been great to develop and we have been able to create them collaboratively as an ensemble. It's been surprisingly fun to play these characters and to discover being in the place between surreal and real (knowing that the real is usually highly surreal!).



**Olly Lloyd-Hooker**  
**Face to the Wall & Fewer Emergencies**  
**Character 3**

Olly will be making his NVT debut in 'Fewer Emergencies'. A native to Milton Keynes, Olly worked for many years within his local theatre's creative learning department, supporting young children as they enter the world of performing arts. Olly has also worked behind the scenes, leading the sound and lighting tech for theatre companies across the country, including for the Edinburgh People's Theatre. With a particular interest for surprising and leftfield scripts, Olly would like to thank the cast and director for the opportunity to take on such an interesting production.

## Tobias Clay - Director (The Evils of Tobacco)

Tobias is excited to be directing at the NVT, having appeared in 'Hangmen', 'Biloxi Blues', 'Far Away' and 'The Permanent Way'. He performs regularly in Sussex and was awarded Brighton and Hove Arts Council Best Actor.



## John Tolputt - Nyukhin

John recently appeared at the NVT in 'Hangmen', 'The Herd', 'Pickwick and Weller', 'The Arsonists' and 'The Homecoming'. He has also performed at The Brighton Little, The Rialto, The Minack and The Pendley Shakespeare Festival.

## The York Realist

by Peter Gill

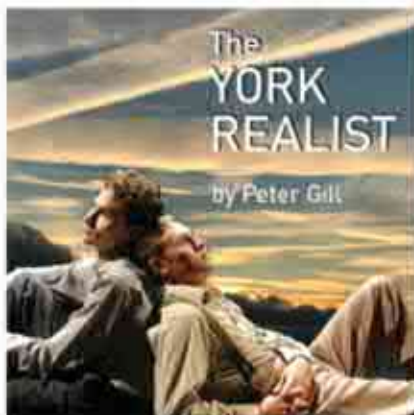
directed by Claire Lewis

4th - 12th November 2022

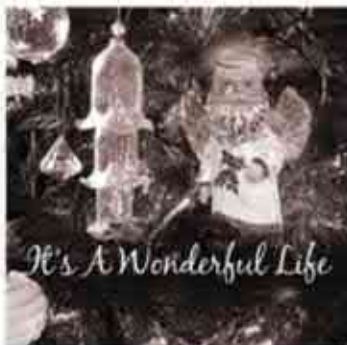
In the Studio Theatre

Town meets country in this masterful and quietly devastating story of missed opportunities and impossible love in 1960s Britain.

Exploring ideas of home, belonging, longing and whether we can ever escape our origins, Peter Gill's searingly truthful play is a blast of rare reality.



"One of the best plays of the 21st century" – The Evening Standard



9th - 17th December 2022

In the Theatre Upstairs

## It's a Wonderful Life

a live radio play adapted by Joe Landry

directed by Gerry McCrudden

'It's a Wonderful Life' is based on the story, 'The Greatest Gift' by Philip Van Doren Stern

# THE PEBBLE TRUST

## Constantinople Bistro

Fusing the tastes of the Middle East, the Balkans,  
Greece, the Caucasus and Central Anatolia.

51 Norfolk Square, BN1 2PA 10am - 11pm, Mon - Sun  
Tel: 01273 777 355

~Est. 1994~  
**silverado**  
contemporary jewellery

31 Bond Street, Brighton



### MAIL BOXES ETC.®

- Print & Copy
- Office Services
- Stationery
- Packing & Shipping
- Packing Materials
- Post & Parcels

Tel: 01273 70 60 20 ○ [www.mbebrighton.co.uk](http://www.mbebrighton.co.uk)

Email: [print@mbebrighton.co.uk](mailto:print@mbebrighton.co.uk) ○ 91 Western Road, Brighton, BN1 2NW

## Contacting the NVT

For ticket information only, call the Box Office - 01273 746118. To book tickets or for other information check our website at [www.newventure.org.uk](http://www.newventure.org.uk). All other enquiries 01273 808353

## NVYT - Youth Theatre

NVT welcomes all young people (12-17) with a passion for or an interest in theatre. Fridays 4.30-6.30pm. £50 per 10 week term, first session is FREE!

## NVT Acting Class

Monday evenings at 7.30pm for all levels of acting skills. It will cost you just £5 per session (£2.50 for NVT members) First visit is FREE! See website for details.

## Become a Sponsor

£250: Advertise on the website, in each programme and our newsletter for one year. Plus two free tickets per show. Contact [fundraising@newventure.org.uk](mailto:fundraising@newventure.org.uk) for details.

Or why not become an Angel, Archangel or even Archangel Gabriel to help us support the current and future improvements to our theatre. For further information please contact the Angels Coordinator Gerry McCrudden: [angels@newventure.org.uk](mailto:angels@newventure.org.uk).

## Membership

Company membership - £15 a year. Full participation, discount on tickets & newsletter. Student/Unwaged - £10 a year. As above... *Proof of status is required.*