

EDWARD ALBEE'S
THE GOAT
OR WHO IS SYLVIA?



**NEW
VENTURE
THEATRE**

**Bedford Place
Brighton BN1 2PT**

PERFORMANCES:

Fri 16th to Sat 24th June 2023 at 7:30pm

Matinee: Sun 18th June at 2:30pm

www.newventure.org.uk

www.facebook.com/newventuretheatrebrighton

Registered Charity no. 268607

Edward Albee's **THE GOAT** **OR WHO IS SYLVIA?**

Welcome to our production of Edward Albee's provocative and daring play, "The Goat, or Who Is Sylvia?" As the director, I am thrilled to be given this opportunity to stage this brilliantly written piece at NVT and invite the audience on this intense exploration of human relationships and taboo subjects whilst being carried along by Albee's arch satire.

Albee's play delves into the realms of love, betrayal, and the complexities of desire. At its core, The Goat challenges our notions of morality and societal boundaries, pushing us to question the limits of love and the consequences of our actions. It endeavours to serve as a disturbing mirror that reflects our own capacity for irrationality and obsession.

In bringing this play to life, it is essential to emphasise the delicate balance between humour and discomfort. The script's blend of sharp wit and gut-wrenching revelations requires a delicate and fearless approach from the actors, as they navigate the shifting emotional terrain of the characters. The audience should hopefully be both captivated and disturbed, experiencing a range of emotions that reflect the complexity of the human condition.

Ultimately, "The Goat" challenges us to examine the boundaries of love, marriage, and societal norms. It demands that we confront our own biases and preconceptions, leaving us with a profound sense of discomfort and self-reflection.

I hope this production sparks conversations and encourages the audience to question the limits of their own understanding of love and acceptance.

I can't extend enough gratitude to my wonderful cast and backstage team for their support, energy and enthusiasm that brought this show to life.

Enjoy the performance!

Martin Malone
Director

Cast

MARTIN Rob Punter
ROSS Jason Lever
STEVIE Gina Cameron
BILLY Killian Wheeler

Creative Team

DIRECTOR Martin Malone
PRODUCTION MANAGER Pat Boxall
STAGE MANAGER Carol Croft
ASSISTANT STAGE MANAGERS Hannah Bryant & Elaine Larkin
COSTUME Director & Cast
SET DESIGN Martin Malone
SET CONSTRUCTION John Everett, George Walter, Simon Glazier,
Rebecca Cormac, Steve Hutton
SET PAINTING Fiona Hewitt
LIGHTING DESIGN Pat Boxall & Will Scott
LIGHTING RIGGING Will Scott
LIGHTING OPERATION Alex Epps
SOUND DESIGN & OPERATION Philip Castle
PROPERTIES Carol Croft, Martin Malone, Hannah Bryant, Elaine Larkin
SPECIALIST PROPERTIES Carol Croft
POSTER Martin Malone
PROGRAMME Ian Amos
REHEARSAL PHOTOGRAPHY Charly Summers
PUBLICITY & SOCIAL MEDIA Maxine Joyce
HEALTH & SAFETY Ian Black

With many thanks to Katie Brownings, Strat Mastoris, Judith Berrill, Yoga in the Lanes for rehearsal space and, as always, to the Front of House and Box office Teams without whom no show would ever go on.



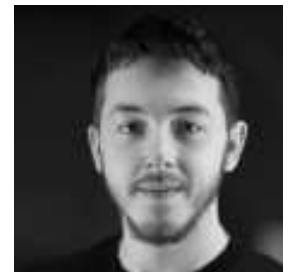
ROB PUNTER (playing Martin): This will be Rob's second appearance at NVT, performing last year in 'The Herd'. Having previously played Boxer in 'Animal Farm', he is concerned people might think he has a preoccupation with livestock. This however has no truth to it having performed in a number of productions, with LOS Music Theatre, including 'Oliver' and 'Hello Dolly', 'Dial M for Murder' for Lewes Little Theatre and 'The River' by Jez Butterworth among others for Brighton Little Theatre.

JASON LEVER (playing Ross): Jason played the Pamphleteer & Ned in 'Turpin' and Bill in 'Hangmen' at NVT in 2022. He wrote 'An Usher Pushed Too Far' filmed in NVT's Shorts & Monologues series. He was Sir Oliver Surface & Uncle Crabtree in 'The School for Scandal' for Dionysus Theatre last year and will be on tour with their adaptation of 'The Seagull' ('La Mouette') this summer. Jason trained at ACT (Foundation, 2018-19) and is adapting his one act play, 'Lola Montez: Truth or Dare', into a one woman play with Catie Ridewood for 2024.



GINA CAMERON (playing Stevie): Gina trained at G.S.A and Hull University. Theatre credits include : 'Sweeney Todd', Mrs.Lovett, dir. Nick Phillips (Edinburgh Festival), 'A Midsummer Night's Dream', Hippolyta/Helena dir. Ian Talbot (Regent's Park Open Air Theatre), 'Love off the Shelf' The Other Woman, dir. Alan Ayckbourn (Stephen Joseph Theatre), 'Time and the Conways' Madge, dir. Graham Sinclair (Haymarket Basingstoke), 'An Inspector Calls' Sheila Birling u/s ,dir. Stephen Daldry(National Theatre), 'Blue Movie' Woman, dir. John Godber, (Battersea Arts Centre). In Brighton: 'The Sarah Kane Monologues', dir. Sarah Kane (Brighton Fringe), 'The Forsyte Saga', dir. Adrian Reynolds (Theatre Royal), 'Five Card Stud', dir. Geoff Williams (The Lantern), 'Frankenstein' De Lacey (The Spire), 'Blue and the Magic Web' Granny, (Attenborough Centre) both for Truestory Theatre Company dir. Gary Sefton. Gina has just finished a run of Jim Cartwright's 'Two' as part of The Brighton Fringe and is also on the committee for Lewes Operatic Society where she most recently played Dolly in 'Hello Dolly!' opposite Rob.

KILLIAN WHEELER (playing Billy): Killian moved to Brighton in September '22 to begin a three year Acting Course at IC Theatre; he previously played various small roles in School and College. This is his debut role with New Venture Theatre and he is thrilled to be working with such a talented cast in this great play.



MARTIN MALONE (Director): Martin's theatre directing credits include: 'The Dwarfs' by Harold Pinter (Nathda Drama Festival winner), 'Poor Super Man' (Cat Factory), 'The Vagina Monologues' (Komedia) and 'All We Have Is Now' (Brighton Fringe). He helped to found The Co-Active Theatre Factory, the Brighton-based collective in 1993, staging acclaimed plays by Brad Fraser in Brighton and London. Martin has also directed commercials, music videos and several short films including: 'The Launch', 'Newton's Cradle', 'Acid Rain' and 'Stranded' (UK Film Council). For TV: 'Ideal', which spawned the long-running successful BBC comedy series starring Johnny Vegas and the animated TV pilot adapted from the BBC Radio Series by Graham Duff starring Mark Gatiss.



2023/2024 Season PREVIEW

You by Mark Wilson

Directed by Emmie Spencer

6th to 14th October - in the Studio

Auditions – 4th, 6th & 9th July - see newventure.org.uk for details

The Bear + The Proposal by Anton Chekov

Directed by Elaine Larkin

3rd to 11th November - in the Studio

Auditions – 22nd, 23rd & 30th July – see newventure.org.uk for details

Bedroom Farce by Alan Ayckbourn

Directed by Katie Brownings

1st to 9th December – in the Theatre Upstairs

Auditions – 12th, 13th, 14th & 18th August – watch the website for details

Taking Care of Baby by Dennis Kelly

Directed by Neil Hadley

19th to 27th January in the Studio

Les Liaisons Dangereuses by Christopher Hampton

Directed by Mark Lester

16th to 24th February - in the Theatre Upstairs

King Lear by William Shakespeare

Directed by Richard Lindfield

15th to 23rd March - in the Studio

Experiment with an Air Pump

by Shelagh Stevenson

Directed by Sam Chittenden

19th to 27th April - in the Theatre Upstairs

Picnic at Hanging Rock by Tom Wright

Directed by Diane Robinson

17th to 25th May - in the Studio

Constellations by Nick Payne

Directed by Mary Allen

14th to 22nd June - in the Theatre Upstairs

The Sweet Science of Bruising by Joy Wilkinson

Directed by Gaby Bowring & Bryony Weaver

12th to 20th July - in the Studio

Booking now at newventure.org.uk

The last play of the 2022/2023 season!



NSFW by Lucy Kirkwood

NSFW is a sharply satirical play about power games, privacy and gender politics in the media. Specifically, the world of magazines.

'Carrie's getting them out for the lads. Charlotte's just grateful to have a job, Sam's being asked to sell more than his body and Aidan's trying to keep Doghouse from going under. Money, sex and Photoshop. Lucy Kirkwood's sharp new comedy looks at power games and privacy in the media and beyond.



Fri 21st to Sat 29th July

Supporting The New Venture

We all need a little 'care and maintenance' from time to time and our lovely Grade II listed theatre is certainly no exception. Whether it's fixing the roof or upgrading equipment it is all increasingly expensive. So any donation you can make to help keep the New Venture alive and kicking will be hugely appreciated, and you can do it either via the donations box by the fireplace in the bar, or using the Donate Button on the homepage of our website - www.newventure.org.uk

THE
PEBBLE
TRUST

Constantinople Bistro

Fusing the tastes of the MiddleEast, the Balkans,
Greece, the Caucasus and Central Anatolia.

81 Norfolk Square, BN1 2PA 10am - 11pm, Mon - Sun
Tel: 01273 777 355

Est 1994

silverado

contemporary jewellery

31 Bond Street, Brighton



MAIL BOXES ETC.®

- Print & Copy
- Office Services
- Stationery
- Packing & Shipping
- Packing Materials
- Post & Parcels

Tel: 01273 70 80 20 • www.mbebrighton.co.uk
Email: print@mbbrighton.co.uk • 81 Western Road, Brighton, BN1 3NW

Contacting the NVT

For ticket information only, call the Box Office - 01273 746118. To book tickets or for other information check our website at www.newventure.org.uk. All other enquiries 01273 808353

NVYT - Youth Theatre

NVT welcomes all young people (12-17) with a passion for or an interest in theatre. Fridays 4.30-8.30pm. £50 per 10 week term, first session is FREE!

NVT Acting Class

Monday evenings at 7.30pm for all levels of acting skills. It will cost you just £5 per session (£2.50 for NVT members) First visit is FREE! See website for details.

Become a Sponsor

£250: Advertise on the website, in each programme and our newsletter for one year. Plus two free tickets per show. Contact fundraising@newventure.org.uk for details.

Or why not become an Angel, Archangel or even Archangel Gabriel to help us support the current and future improvements to our theatre. For further information please contact the Angels Coordinator Gerry McCrudden: angels@newventure.org.uk.

Membership

Company membership - £15 a year. Full participation, discount on tickets & newsletter.
Student/Unwaged - £10 a year.
As above... Proof of status is required.