

# The YORK REALIST

by Peter Gill

**NVT**  
NEW  
VENTURE  
THEATRE

Friday 4th - Saturday 12th November 2022 at 7.30pm  
Matinee: Sunday 6th November at 2.30pm

[www.newventure.org.uk](http://www.newventure.org.uk)  
[www.facebook.com/NewVentureTheatreBrighton](https://www.facebook.com/NewVentureTheatreBrighton)

Bedford Place,  
Brighton BN1 2PT

Registered Charity No. 208507

# THE YORK REALIST

by Peter Gill

Set in a remote Yorkshire cottage in the early 1960s, *The York Realist* charts the love affair between working-class George and middle-class Londoner John, who's come up to York to work as Assistant Director on a staging of the Mystery plays.

It's a story about love – an impossible and, at that time, illegal love – but it's also a story about family, class, social change and, ultimately, about human beings in all their complexity and contradiction.

When I first read the play, I was struck by how vivid, tangible and real the world that Gill has so skilfully created is. Just reading it transported me to that cottage – I felt like I was there listening in on the conversations and witnessing the tensions and complexities of the relationships.

The play takes its title from the name of the unknown medieval dramatist who wrote the Mystery plays – a writer whose work is characterised by a gritty, tough style where ordinary men and women, in their own dialect, speak their heart and souls.

This stark realism and truthfulness is what also defines *The York Realist* and what makes it such a gift – and a responsibility – for actors and directors to work on.

Peter Gill was generous enough to take the time to talk to us about the play during rehearsals. "Do the simple stuff well" were his words to us. I hope we have succeeded.

Thank as always to my talented cast, and to my hardworking team for their dedication and support.

Claire Lewis – Director

**GEORGE - Will Mytum**  
**JOHN - Chris Church**  
**MOTHER - Nikki Dunsford**  
**DOREEN - Sophie Bloor**  
**BARBARA - Amelia Thurley**  
**ARTHUR - Lewis Todhunter**  
**JACK - Bertie Hawes**

#### **Location**

A farmer's cottage, rural Yorkshire. The action takes place across a period of approximately one year from spring 1962 to spring 1963.

#### **Running time**

Act 1 - 45 minutes, Act 2 - 45 minutes

**DIRECTOR:** Claire Lewis  
**ASSISTANT DIRECTOR:** Emmie Spencer  
**PRODUCTION MANAGER:** Ulrike Schilling  
**STAGE MANAGER:** Bryony Weaver  
**ASM:** Carrie Hynds, Gaby Bowring, Natalie Sacks, Terri Challis  
**COSTUME DESIGN:** Pat Boxall  
**MAKEUP & HAIR:** Richi Blennerhassett  
**SET DESIGN:** Michael Folkard  
**SET CONSTRUCTION:** John Everett  
**SET CONSTRUCTION:** Simon Glazier  
**SET CONSTRUCTION:** George Walter  
**LIGHTING DESIGN:** Strat Mastoris  
**LIGHTING RIGGING:** Strat Mastoris, Will Scott  
**LIGHTING OPERATOR:** Alex Epps  
**SOUND DESIGN:** Richard Lindfield  
**SOUND OPERATOR:** Michael Pegley, Apollo Videaux  
**PROPS:** SM Crew, Claire Lewis, Katie Brownings  
**POSTER & PROGRAMME:** Tamsin & Strat Mastoris  
**PRODUCTION COORDINATOR:** Tom Kitch  
**PHOTOGRAPHY:** Strat Mastoris  
**PUBLICITY & MARKETING:** Emmie Spencer, Apollo Videaux  
**HEALTH & SAFETY:** Ian Black

A massive thanks for their support with various aspects of the production to:  
Katie Brownings, Ann Atkins, Helen Schluter, Gaby Bowring  
David Villiers, Ian Black, Latest TV, Graham Brown  
Kelly Paterson, Fred Pont, Brighton Little Theatre, GladRags  
Barbara Campbell and as always, to the Front of House and Box Office  
teams, without whom no show would ever go on.





### Will Mytum - George

Will trained at East 15, and has lived in Brighton for four years. This is Will's second production at the NVT, following 'Consent' earlier this year. Professional credits include: the original cast of Mike Kenny's 'The Railway Children' at York Theatre Royal, 'Bottleneck' at the Old Red Lion Theatre, 'Jumpers' for Goalposts at Oldham Coliseum, 'Bitesize Chekhov' at Edinburgh Fringe & National Tour and 'FCUK'd' at the Bunker Theatre, for which he was nominated for Best Actor at the Off-West End Awards. Will is the producer of We Are Animate Theatre Company and General Manager at BOAT.

### Chris Church - John

Chris started acting with Seaford-based Synergy Theatre, where he appeared in 'Romeo and Juliet' (Romeo), 'Our Town' (George Gibbs) and 'Ghosts' (Oswald), among many others. He then trained at Rose Bruford College and has more recently spent the last year working with Brighton Little Theatre, appearing in 'Blink' (Jonah), 'Anne Boleyn' (King James) and 'The Railway Children' (Peter). 'The York Realist' is Chris' NVT debut.



### Nikki Dunsford – Mother

Nikki trained at the Royal Ballet School and Met Film School and began her career as a classical ballet dancer performing at ROH London, Sydney Opera House and Mannheim Theatre, before joining the commercial world in various West End Productions. TV roles include 'Dr Who', 'Blake's Seven' and 'Brideshead Revisited'. Recent film work includes 'Alice Through the Looking Glass' produced by Tim Burton. Nikki is fortunate enough to have been directed by Claire Lewis on three previous occasions in 'The Boyfriend', 'Charles III' and 'Frankenstein'. She has relished the opportunity to play Mother in this beautiful play.

## Sophie Bloor - Doreen

Sophie Bloor is an actor and playwright from Ilkeston, near Nottingham. She studied at RADA and The London School of Method Acting, and was a member of the BAFTA award winning Television Workshop, Soho Theatre's Comedy Lab and The National Youth Theatre. Sophie has just finished filming 'The York Witches Society' for MSR Media. She has also worked extensively in voiceover and can be heard in Sky's 'Landscapers', starring Olivia Colman, Vicky McClure's 'Without Sin' and adverts for The Guardian's Life Skills Scheme.



## Amelia Thurley - Barbara

Amelia has been a member of the National Youth Theatre since 2019. Previous roles include Lilly in Simon Stephen's 'Punk Rock'. She also directed an adaptation of Luigi Pirandello's 'Six Characters in Search of An Author' at The Mission Theatre, Bath. This is Amelia's second show with NVT, having previously played Jessica in Ayckbourn's farcical comedy 'Communicating Doors' earlier this year.

## Lewis Todhunter - Arthur

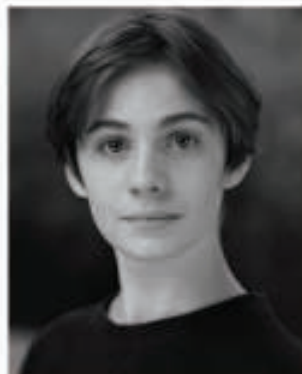
A plasterer by day and actor by night, Lewis is becoming something of a familiar face at NVT having appeared as the poetic boyfriend in 'The Herd' back in February, the love-torn John in 'Cock' in May this year, and most recently, a time-travelling lingerie model in July's 'Communicating Doors'.





## Bertie Hawes - Jack

Bertie has been performing from a young age. Previous roles include Gavroche in Rodean Theatre's production of 'Les Misérables' and Dandy Dan in Apollo Theatre Art's 'Bugsy Malone'. He is currently in his first year of studying for a Diploma in Performing Arts at The Brit School in London. 'The York Realist' is Bertie's NVT debut.



## Claire Lewis - Director

Born and bred in Brighton, Claire has been involved with the local theatre scene for upwards of 30 years, directing, performing and producing.

Previous directing credits include 'That Face', 'The Beauty Queen of Leenane', 'The Boy Friend', 'Company', 'King Charles III', 'Frankenstein', 'The Mill on the Floss', 'The Twits', 'The History Boys', 'Far From the Madding Crowd', 'Jerusalem', 'Calendar Girls: The Musical', 'The Little Tempest'. For New Venture Theatre: 'Parlour Song', 'Proof', 'Happy Now?', 'Di and Viv and Rose'.

Next Summer Claire will be directing Lee Hall's critically acclaimed 'Shakespeare in Love' for Brighton Little Theatre.



## Emmie Spencer - Assistant Director

Emmie's a familiar face on stage at the NVT having appeared in several productions here, including Viv in last year's 'Di and Viv and Rose', Daphna in 'Bad Jews' (2018) and Hester Collyer in 'The Deep Blue Sea' (2017). Recent credits elsewhere include 'Here At Last Is Love' (The Stables Theatre), 'Voices from Home' (Old Red Lion Theatre) and 'Bug Camp' (Broken Silence Theatre). This is Emmie's second foray into directing, having previously directed a Sam Chittenden short 'Moving Slowly'.





9th - 17th December 2022  
In the Theatre Upstairs

## **It's a Wonderful Life** a live radio play adapted by Joe Landry directed by Gerry McCrudden

'It's a Wonderful Life' is based on the story,  
'The Greatest Gift' by Philip Van Doren Stern

No one is born to be a failure. No one is poor who has friends. Simple thoughts were the inspiration for 'It's a

Wonderful Life' one of the most beloved films ever made. With this adaptation now brought to the stage as an American 'radio play' of the 1940s.

George Bailey, pillar of his community, a kind man dedicated to the welfare of others. Through the actions of the town's avaricious local banker, Mr Potter, George is driven to the point of suicide. In answer to the prayers of the townsfolk for the missing George, a merciful angel comes to the rescue - showing George what a sad and sorry place the world would have been without him. George now realises that he has a Wonderful Life.

*A life affirming message of redemption, hope restored and renewed. All will be well.*

### **WHY NOT GIVE THE GIFT OF NVT MEMBERSHIP TO A FRIEND OR RELATIVE THIS CHRISTMAS?**

**For only just £15 per year, NVT members get:**

- \* Discount on their ticket – £2 on each of our 10 productions in a year – meaning a saving of £20 annually if they came to every show.
- \* New for 2022/23: a free programme (typically saving them £1 per production).
- \* A monthly newsletter emailed to them (excluding August).
- \* 10 productions per year for them to get involved in – acting, directing, stage management, costumes, props, set design and construction etc.
- \* 50% discount on Acting Classes held each Monday (October to July, excluding Christmas and May).
- \* Occasional social events exclusively for members
- \*\* And most importantly of all...with your gift you will be helping to maintain this thriving local voluntary theatre, over 70 years old and still going strong.



**Annual Company Membership: £15**

**Go to [newventure.org.uk](http://newventure.org.uk) or use the QR code...**





# THE PEBBLE TRUST

## Constantinople Bistro

Fusing the tastes of the Middle East, the Balkans,  
Greece, the Caucasus and Central Anatolia.

51 Norfolk Square, BN1 2PA 10am - 11pm, Mon - Sun  
Tel: 01273 777 355

~Est 1994~  
**silverado**  
contemporary jewellery

31 Bond Street, Brighton



## MAIL BOXES ETC.®

- Print & Copy
- Office Services
- Stationery
- Packing & Shipping
- Packing Materials
- Post & Parcels

Tel: 01273 70 60 20 [www.mbebrighton.co.uk](http://www.mbebrighton.co.uk)

Email: [print@mbebrighton.co.uk](mailto:print@mbebrighton.co.uk) 91 Western Road, Brighton, BN1 2NW

## Contacting the NVT

For ticket information only, call the Box Office - 01273 746118. To book tickets or for other information check our website at [www.newventure.org.uk](http://www.newventure.org.uk). All other enquiries 01273 808353

## NVYT - Youth Theatre

NVT welcomes all young people (12-17) with a passion for or an interest in theatre. Fridays 4.30-6.30pm. £50 per 10 week term, first session is FREE!

## NVT Acting Class

Monday evenings at 7.30pm for all levels of acting skills. It will cost you just £5 per session (£2.50 for NVT members) First visit is FREE! See website for details.

## Become a Sponsor

£250: Advertise on the website, in each programme and our newsletter for one year. Plus two free tickets per show. Contact [fundraising@newventure.org.uk](mailto:fundraising@newventure.org.uk) for details.

Or why not become an Angel, Archangel or even Archangel Gabriel to help us support the current and future improvements to our theatre. For further information please contact the Angels Coordinator Gerry McCrudden: [angels@newventure.org.uk](mailto:angels@newventure.org.uk).

## Membership

Company membership - £15 a year. Full participation, discount on tickets & newsletter. Student/Unwaged - £10 a year. As above... *Proof of status is required.*