

# Constellations



by Nick Payne

directed by Mary Allen

**NVT**

**NEW  
VENTURE  
THEATRE**

Bedford Place,  
Brighton BN1 2PT

Friday 14th - Saturday 22nd June 2024 at 7.30pm  
Matinee: Sunday 16th June at 2.30pm

[www.newventure.org.uk](http://www.newventure.org.uk)  
[www.facebook.com/NewVentureTheatreBrighton](https://www.facebook.com/NewVentureTheatreBrighton)

Registered Charity No. 268607

# Constellations

by Nick Payne

Originally premiered to critical acclaim at the Royal Court Theatre in 2012, the play explores the complexities of human relationships and the enigmatic world of quantum mechanics. It tells the story of Roland, a beekeeper, and Marianne, a physicist at the University of Sussex.

After they meet at a barbeque the two become lovers. They marry – or do they? Through a series of vignettes their relationship unfolds across multiple parallel universes – a multiverse - as the play explores the infinite possibilities of love and fate. Each universe offers a different outcome.

Through its two-person cast, mesmerizing dialogue and innovative structure, Constellations explores our perceptions of both time and space.

It is an amazing play. When first I saw a production I was totally blown away. Nick Payne's unlikely intertwining of beekeeping and string theory has haunted me ever since. I determined that one day I would mount my own production and am grateful to NVT for giving me this opportunity. What fascinates me is that, while most plays have a linear structure, Constellations is different. Through the characters of theoretical physicist Marianne and beekeeper Roland the action moves backwards, sideways and forwards as we explore an ever-changing theatrical multiverse. The essence of the play can be summed up in one of its many memorable lines: "Every choice, every decision you've ever and never made exists in an unimaginably vast ensemble of parallel universes." I find it a fascinating work by a playwright whose plays I greatly admire. It manages to be challenging and demanding while being, at the same time, absorbing and enjoyable. Rare qualities indeed.

Mary Allen  
Director

## **CAST**

Roland: Greg Donaldson

Marianne: Kate Alderton

## **CREATIVE TEAM**

Director: Mary Allen

Production Manager: Robert Dunkley

Stage Manager: David Turton

ASM: Ayshen Irfan

Set Design: John Everett

Lighting Design & Rigging: Strat Mastoris

Sound Design: Philip Castle

Set Construction: John Everett, George Walter, Simon Glazier, Steve Hutton,  
Sam Dearden, Christine Hauschild, Tomasz Baraniecki

Set Painting: John Everett & Sam Dearden

Lighting Operation: Will Neal

Sound Operation: Philip Castle

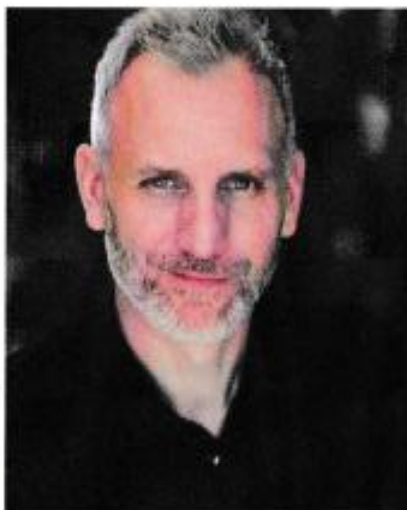
Poster & Programme: Tamsin Mastoris

Publicity Photography: Strat Mastoris

Publicity & Marketing: Robert Dunkley, Greg Donaldson, Kate Alderton

Health & Safety: Ian Black

*With many thanks to Katie Brownings for all her help and advice, and as always, to the Front of House and Box Office teams, without whom no show would ever go on.*



#### **Roland: Greg Donalson**

Greg graduated from LAMDA in 1995 and has gone on to enjoy a varied acting career. He has performed at the National Theatre, The Almeida and The Lyric Hammersmith in interesting and challenging roles. He has also appeared in feature films such as *V for Vendetta*, *Echelon Conspiracy* and *The Football Factory*. His TV appearances include roles in *Ashes to Ashes*, *Silent Witness* and a three-year stint as DC Tom Proctor in *The Bill*. After a ten-year break in acting and training as a psychotherapist, Greg returned to the stage to play 'The Man' in David Greig's play *Pyrenees* and 'Trevor' in Alan Ayckbourn's *Bedroom Farce* at the NVT in 2023. He is looking forward to directing at the NVT in the 25-26 season'

#### **Marianne: Kate Alderton**

Kate graduated from LAMDA in 1995. She has performed at Sheffield Crucible, The Lyric Hammersmith, touring nationally with Frantic Assembly, The Actors Touring Centre, Theatre Royal Bath and Bill Kenwright Productions. She co-produced and starred in Daisy Campbell's *Cosmic Trigger* with The Mycelium. Kate appeared as a regular in ITVs *Noah's Ark* as well as *The Bill*, *Doctors*, *Rosemary and Thyme*, and *Casualty* among many others. She has just completed developing and directing the national tour of singer-songwriter Tim Arnold's multimedia show, *Super Connected LIVE*.

Kate also works as communication skills facilitator for the NHS, helping train professionals to have conversations around diagnosis and life limiting illnesses.

This is her first appearance at the NVT.







#### Director : Mary Allen

Mary has spent her life working in the arts, starting as an actor in *The Rocky Horror Show* and *Godspell* before moving on to lead several large arts organisations, including Arts Council England and the Royal Opera House. She moved to Brighton in 2012 and started directing for the NVT a few years later. Her work has included Tom Stoppard's *The Real Inspector Hound*, and Florian Zeller's play *The Father*. She first saw *Constellations* about eight years ago and was completely blown away by the way the action moves backwards and forwards, exploring two very different characters and their theatrical multiverse.

#### Playwright: Nick Payne

Nick Payne is a playwright and screenwriter. His theatre work has played in London's West End and Broadway garnering sell out audiences and multiple awards.

*Constellations* was first staged at the Royal Court Theatre, London in 2012. It transferred to the West End, then to Broadway and then finally embarked on a UK tour. More recently he adapted Julian Barnes' Man Booker Prize-winning novel *The Sense of an Ending* for screen. His six-part television series *Wanderlust* for BBC 1 is currently on iPlayer. His film *We Live In Time*, directed by John Crowley and starring Andrew Garfield and Florence Pugh will be released in 2024.



# NVT Appeal Puzzle

F	L	O	K	C	I	T	S	P	A	L	S	T
L	A	U	X	J	S	E	R	I	T	A	S	E
L	C	Y	L	P	D	K	Q	K	M	C	Z	V
A	I	D	B	B	S	K	L	A	W	I	C	I
B	S	E	W	E	H	D	R	L	V	S	K	S
W	Y	M	G	R	C	D	E	K	T	U	O	R
E	H	O	R	R	O	R	D	M	I	M	E	E
R	P	C	G	L	N	V	A	R	I	K	P	M
C	Y	D	E	G	A	R	T	F	D	R	I	M
S	E	M	I	M	O	T	N	A	P	P	C	I
E	E	G	C	L	A	S	S	I	C	A	L	H

Farce  
Crime  
Horror  
Physical

Comedy  
Satire  
Mime  
Classical

Tragedy  
Screwball  
Musical  
Epic

Pantomime  
Melodrama  
Slapstick  
Immersive

Here are some well known types of productions you'll find in a theatre, and hopefully you'll also find them in the puzzle above. You'll also find a fair few at the NVT and they all cost money to stage, light, costume, etc so it would be hugely appreciated if you can help with a donation, however small, by putting cash in the Donations Box beside the fireplace in the Bar, or donating online by visiting :

[www.newventure.org.uk](http://www.newventure.org.uk)

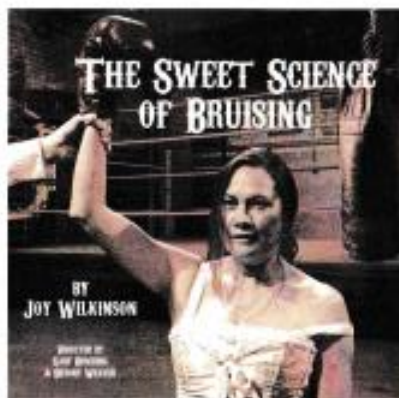
12th - 20th July 2024  
In the Studio Theatre

## **The Sweet Science of Bruising** by Joy Wilkinson

directed by Gaby Bowring & Bryony Weaver

1869. Islington, North London. Four very different women are drawn into the world of exhibition pugilism: Violet Hunter, a nurse with ambitions of becoming a doctor; Anna Lamb, an abused wife and mother for whom boxing is a way to fight back; Matilda 'Matinee Matty' Blackwell, who finds flashing her fists more satisfying than flashing her ankles when times are hard; and Polly Stokes, a hard-talking pit brow lass who dreams of becoming a prize fighter.

Each woman enters the ring under the instruction of 'Professor' Charlie Sharp, fighting each other and against the expectations of the men around them, in a battle for a better future. And, for the title of 'Lady Boxing Champion of the World'.



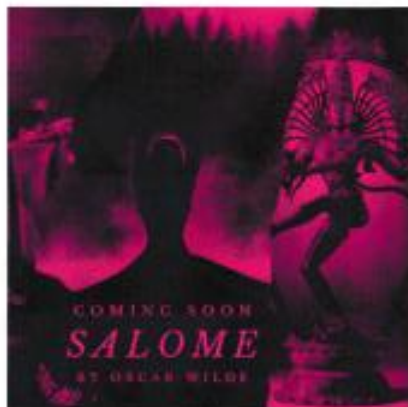
4th - 12th October 2024  
In the Theatre Upstairs

## **Salome** by Oscar Wilde

directed by Natasha Higdon

Oscar Wilde based his 'Salome' on historical texts which referred to the woman as simply 'the girl'. Wilde's version gave Salome not just an identity, but agency over her life decisions. This new telling places her in a dystopian future where women are close to extinction. The rulers of this new age – Salome's step-father Herod and his male court – regard her as a kind of Vestal Virgin, subject to their rules and orders. Is Salome's infatuation with Jokanaan simply lust - or an act of self-sabotage that will inevitably lead to her death?

You'll have to decide for yourselves, watching a performance that will involve dance, physical theatre and ensemble choreography.





## Supporting The New Venture

We all need a little 'care and maintenance' from time to time and our lovely Grade II listed theatre is certainly no exception. Whether it's fixing the roof or upgrading equipment it is all increasingly expensive. So any donation you can make to help keep the New Venture alive and kicking will be hugely appreciated, and you can do it either via the donations box by the fireplace in the bar, or using the Donate Button on the homepage of our website - [www.newventure.org.uk](http://www.newventure.org.uk)



THE  
PEBBLE  
TRUST



# Constantinople Bistro

Fusing the tastes of the Middle East, the Balkans,  
Greece, the Caucasus and Central Anatolia.

51 Norfolk Square, BN1 2PA 10am - 11pm, Mon - Sun  
Tel: 01273 777 355



# silverado



## MAIL BOXES ETC.®

- |  |   |
|--|---|
| <input type="checkbox"/> Print & Copy    | <input type="checkbox"/> Packing & Shipping |
| <input type="checkbox"/> Office Services | <input type="checkbox"/> Packing Materials  |
| <input type="checkbox"/> Stationery      | <input type="checkbox"/> Post & Parcels     |

Tel: 01273 70 60 20  [www.mbebrighton.co.uk](http://www.mbebrighton.co.uk)  
Email: [print@mbbrighton.co.uk](mailto:print@mbbrighton.co.uk)  91 Western Road, Brighton. BN1 2NW

## Contacting the NVT

For ticket information only, call the Box Office - 01273 746118. To book tickets or for other information check our website at [www.newventure.org.uk](http://www.newventure.org.uk). All other enquiries 01273 808353

## NVT Acting Class

Monday evenings at 7.30pm for all levels of acting skills. It will cost you just £5 per session (£2.50 for NVT members) First visit is FREE! See website for details.

## Become a Sponsor

£300: Advertise on the website, in each program email update and six monthly printed newsletter for 2 years. Plus two free tickets per show on request. Contact [finance@newventure.org.uk](mailto:finance@newventure.org.uk)

Or why not become an Angel, Archangel or even Archangel Gabriel to help us support the current and future improvements to our theatre. For further information please contact the Angels Coordinator Gerry McCrudden: [angels@newventure.org.uk](mailto:angels@newventure.org.uk).

## Membership

Company membership - £15 a year. Full participation, discount on tickets & newsletter. Student/Unwaged - £10 a year. As above... Proof of status is required.